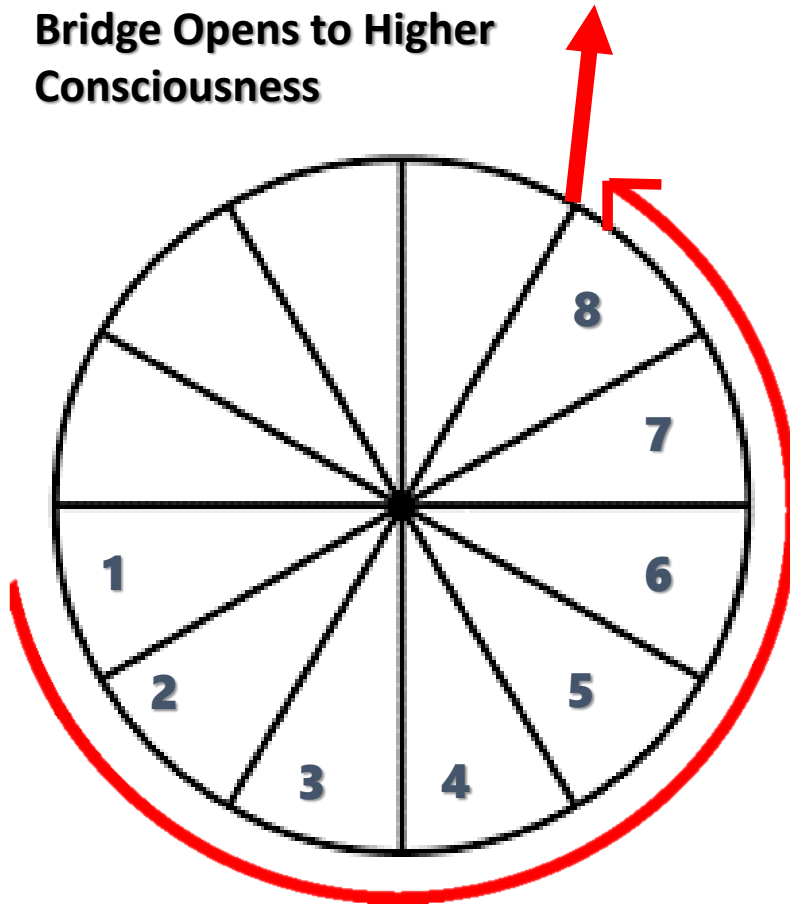


Lifting the Veil on the truth of You

9th House

9th House of Spirituality

**Bridge Opens to Higher
Consciousness**

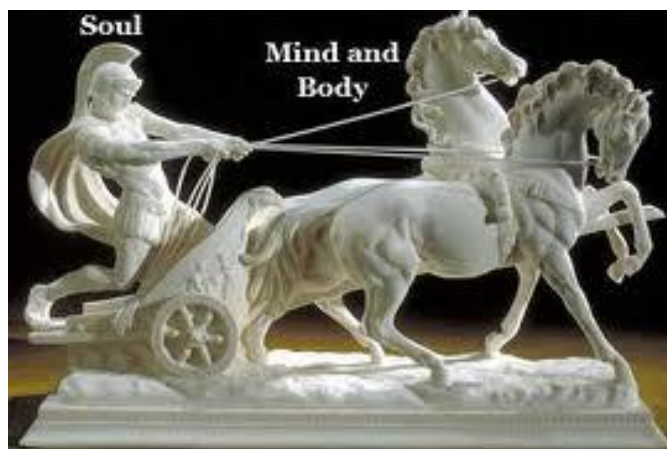


**You cannot enter if
you choose to still
operate from your
lower will**

**Burning off the Dross is
required through these
8 Houses**

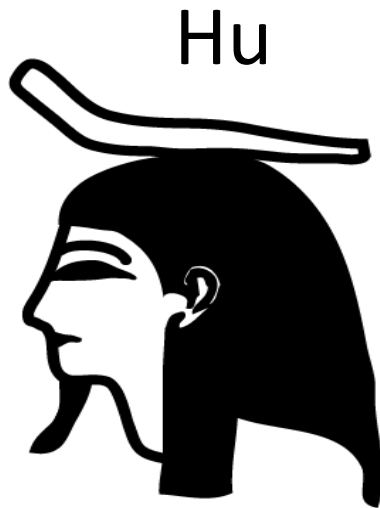
**The Unfinished Business
of the Soul
that needs purifying**

The Vehicles of the Soul

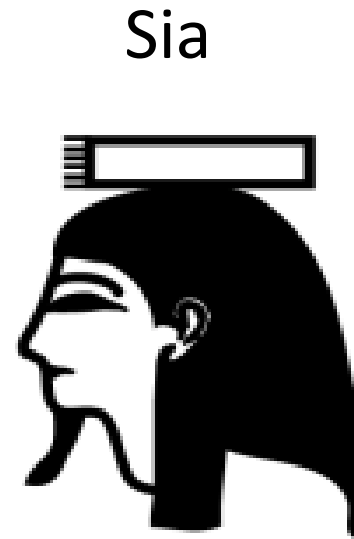


Mental Plane	Higher	CAUSAL BODY	TO EVOLVE WITH	<u>IDEALS</u> ABSTRACT THOUGHTS
	Lower	MENTAL BODY	TO THINK WITH	<u>IDEAS</u> CONCRETE THOUGHTS
ASTRAL PLANE		ASTRAL BODY	TO FEEL WITH	<u>EMOTIONS</u> DESIRES
PHYSICAL PLANE		PHYSICAL BODY	TO ACT WITH	<u>SENSORIAL REACTIONS</u> ACTIONS

Everything in the Higher houses can only be accessed by
using the principle of Hu & Sia



Authoritative Utterance
Hu speaks in the darkness –
precreation



Higher Mind - Consciousness
Exceptional insight



UNIVERSAL LAWS OF MA'AT

Together Hu & Sia express
authoritative utterance of
exceptional insight and
are at the heart of both
creative activity in moral
practice of the Ma'atian
ethics

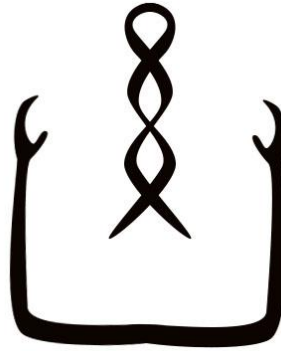


“Maat insists on a holistic view of the moral ideal, one that gives rightful and adequate attention to self, society and the world as component parts of an interrelated order of rightness. The ongoing quest then is to maintain, renew, repair and enhance this order as self-conscious creators and bringers of the good in the world in a process and practice called srujdj ta – restoring, repairing and renewing the world. Such a world encompassing concept of moral practice invites us to move beyond the narrow notions of self, national, and even species interest and understand and assert ourselves as members of an interrelated order of the existence in the world.”



Heka

"He Who Activates the Ka



**represents the ability to transform
by using the right words.**

**Therefore, Heka is identified with
both Sia and Hu**

**As such, Hu–Sia–Heka represent a
trinity of active transformation.**



The Divine Child



Heka is often depicted holding the Ankh, the key of life, that represented eternal life

The headdress worn by Heka was called the Hemhem crown reflecting his divine status and his royal status as a legitimate heir

Heka wears a side lock which was a plaited lock of hair worn on the side of otherwise shaven heads. Ancient Egyptian boys would stop wearing the side lock once they had reached the age of fourteen years

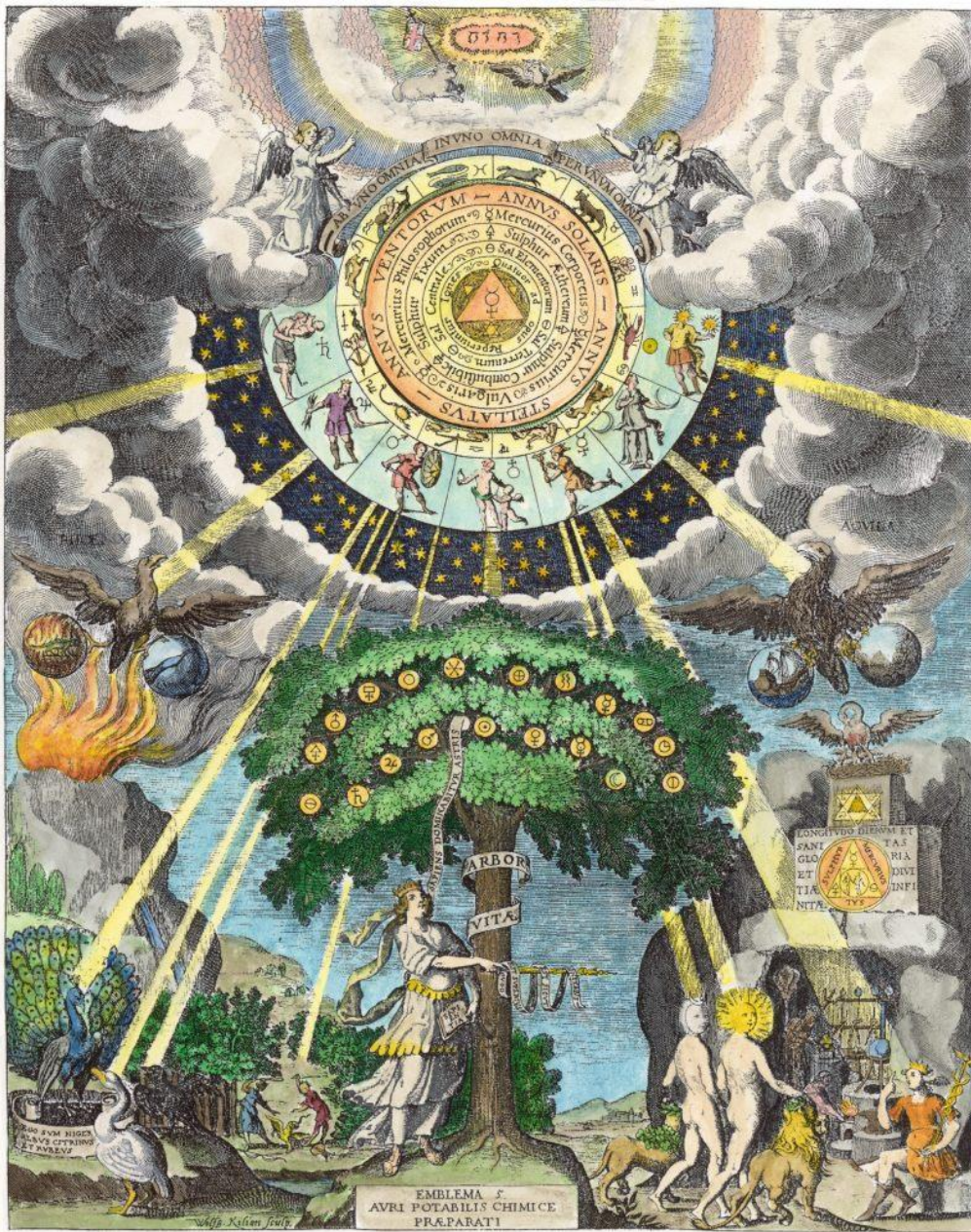
Heka is also depicted holding the crook and flail, both symbols of royalty



THE LAW OF CORRESPONDENCE

**AS ABOVE, SO BELOW
AS WITHIN, SO WITH OUT**

Discover Your Aura

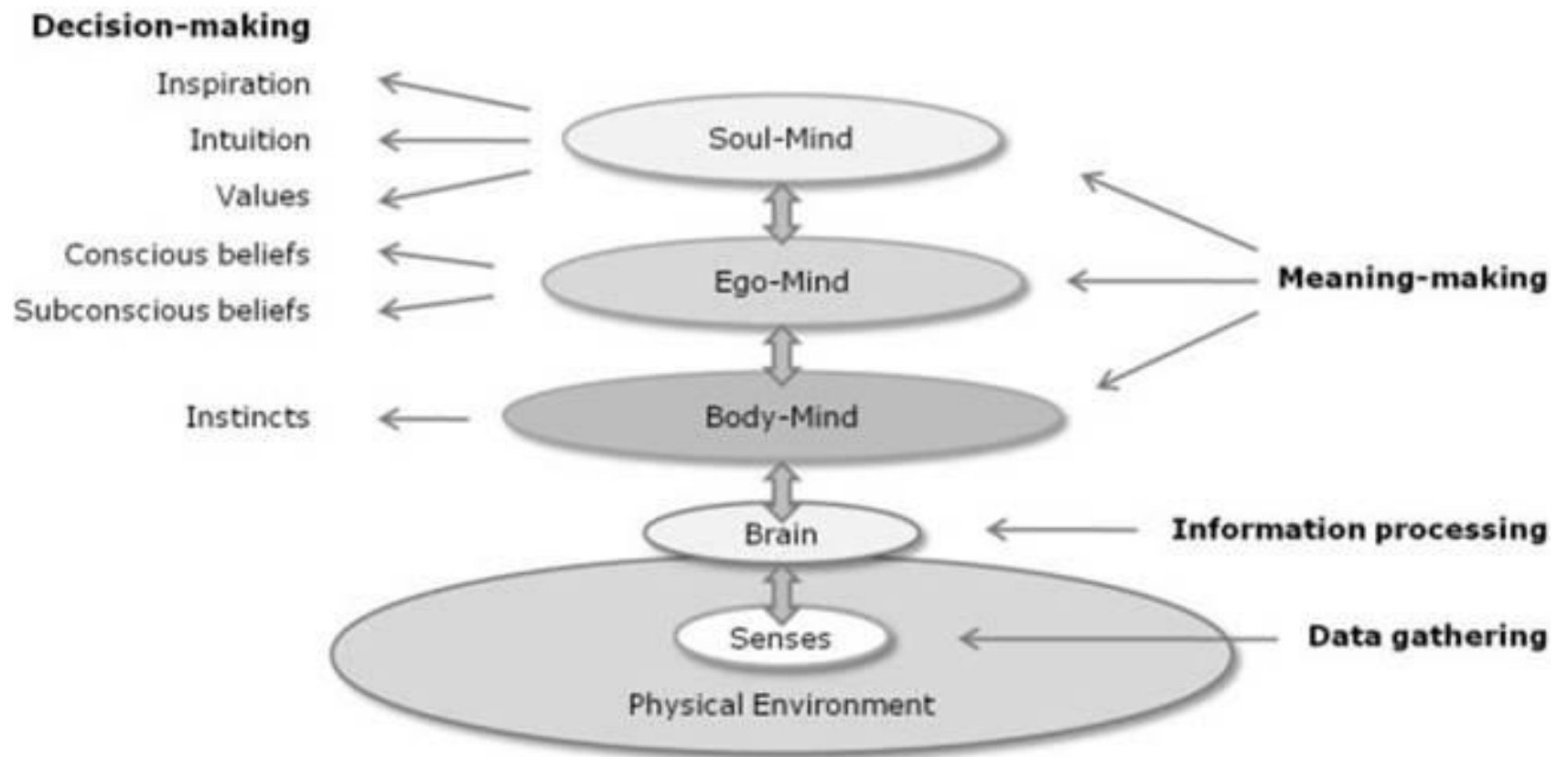


**Alchemical
Union –
The
Philosopher's
Stone**

Tree of Life



**Tree of Knowledge -
Judgement separates**





*That which you do not
bring to consciousness
comes to you as your
Fate.*

*That which you do bring to
consciousness whether it
was what you thought you
wanted or not, is your
destiny!*

Carl Jung





The White King

BEING

Our Spiritual Self

**Represents our BEING for which the battle is given.
He is only able to take a single step in any direction.**

**Through this is shown, that in order to reach the
BEING, which distributed the powers in its
beginning, all these must be regained step by step.**

The Red King

BEAST

Doing

Our Primal Self

Counterpart of the White King

**Its counterpart is the force and the intelligence
of the Beast, profoundly hidden inside us.**

The Inner and Particular Divine Mother of each one- is the most powerful on the board game, she has full freedom of movement in any direction, and is the most valuable –

Like it is shown in esotericism: the Fire of the Divine Mother, without which we can't destroy the evil in us.



The White Queen

Intuition

Higher Mind

To Evolve With

Ideas

Abstract Thoughts

The Red Queen

Instinct

Lower Mind

To Think With

Ideas

Concrete Thought

The pawns represent the neophytes of the road – men and women that launch themselves to conquer the soul.



Pawns represent ordinary men and women attempting to move across the board of life toward eventual initiation into union with the divine.

The pawn utilizes only the simplest interactions with other pieces and does not recognize the divine forces behind its life.

It only moves one step at a time. Always forward, never backward. It can move either straight ahead when challenged, or diagonally, showing that it can utilize the head or heart in it's progress. If the pawn gets far enough to triumph over life's trials and adventures, to the eighth square of the opposing side, it achieves a higher state. At this point it can transform into any piece it desires.

Usually the pawn is made a queen and thus becomes a co-creator.